



SHOWERS ENGINEERING

Civil & Structural Engineers
Design Inspections Reports

9A SOUTH BUILDING
EAST QUAY CORPORATE PARK
34 - 36 GLENFERRIE DRIVE
ROBINA QLD 4226

ALL CORRESPONDENCE TO
PO BOX 590 ROBINA, QLD. 4226

PH (07) 5578 8088
FAX (07) 5578 9429

15 January 2008
08140

Mr Don Dunkinson
Roof Extenda Pty Ltd
PO Box 373
Hastings
VIC 3915

ROOF EXTENDA BRACKET ***CERTIFICATION FOR USE IN QUEENSLAND***

We being Structural Engineers within the meaning of the Uniform Building Regulations certify that the roof extenda bracket is able to resist loads as set out in the design guidelines and is suitable for use in Queensland.

These brackets are suitable for wind loads to AS1170.2 Region B Category 2 W41 N3.

This certification is not valid beyond 2008.

Signed

R J Showers
Dip C E MIE Aust RPEQ 1547



J.V. CONSULTING ENGINEERS PTY. LTD.

A.C.N 007 208 228
364 MAIN STREET
MORNINGTON 3931

PHONE
FAX
EMAIL

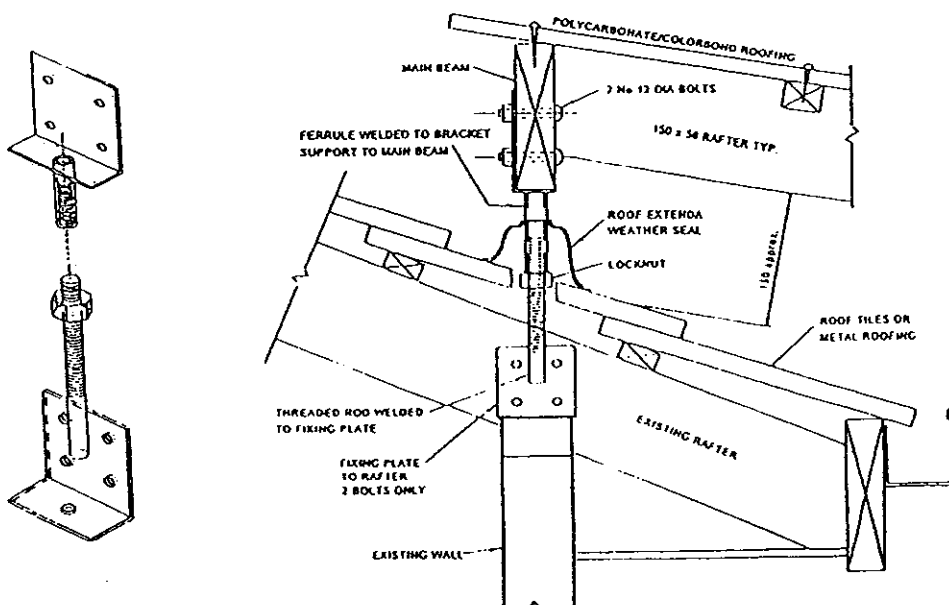
(03) 5975 9333
(03) 5975 9444
eng@jvconeng.com.au

Our Ref: 3585/904
14 September 2004

"EXTENDA" BRACKETS

The following table is based upon:

1. Brackets connected over rafter / truss support locations.
2. Rafters / truss tie downs to AS1684 for appropriate wind loading.
3. Building height 5.0 m or less.
4. Region 'A', 'B' & 'C' wind areas as defined in AS1170.2.
5. Wind terrain Categories 1, 2, 3 & 4.
6. Pitched free roofs – max. uplift coefficient of 1.4 on wind pressures adopted.
7. Minimum 2-M12 ϕ bolts per 'Extenda' bracket.
8. Hardwood (J3), Seasoned Hardwood (JD3), Seasoned Softwood (JD4)
rafters / trusses considered.
9. 35 & 45mm thickness considered for JD3 & JD4.
38 & 50 mm thickness considered for J3.



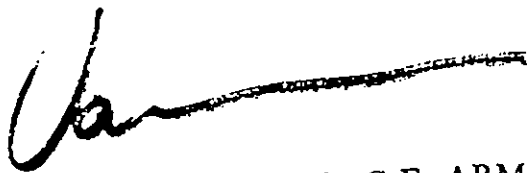
TOTAL SQUARE METERS OF ROOF AREA ABLE TO BE SUPPORTED

		CATEGORY 1		CATEGORY 2		CATEGORY 3, 4	
		REGION A	REGION B	REGION A	REGION B	REGION A	REGION B
JD3	45 mm	4.6 m ²	3.1 m ²	6.2 m ²	4.1 m ²	9.0 m ²	6.0 m ²
	35 mm	3.8 m ²	2.5 m ²	4.9 m ²	3.3 m ²	7.4 m ²	4.9 m ²
JD4	45 mm	3.4 m ²	2.3 m ²	4.4 m ²	2.9 m ²	6.5 m ²	4.3 m ²
	35 mm	2.7 m ²	1.8 m ²	3.6 m ²	2.4 m ²	5.3 m ²	3.5 m ²
J3	50 mm	3.5 m ²	2.3 m ²	4.6 m ²	3.1 m ²	6.8 m ²	4.5 m ²
	38 mm	2.6 m ²	1.7 m ²	3.5 m ²	2.3 m ²	5.2 m ²	3.4 m ²

		CATEGORY 1 & 2	CATEGORY 3 & 4
		REGION C	REGION C
JD3	45 mm	3.0 m ²	4.2 m ²
	35 mm	2.4 m ²	3.4 m ²
JD4	45 mm	2.2 m ²	3.0 m ²
	35 mm	1.8 m ²	2.5 m ²
J3	50 mm	2.2 m ²	3.2 m ²
	38 mm	1.7 m ²	2.4 m ²

Updated SEPT04

J.V. Consulting Engineers Pty Ltd



John Varkulevicius Dip C.E, ARMIT., B.E., EC 1399
Director